

PENELOPE'S NEWS



September 2014

The newsletter of the Ottawa Valley Weavers' and Spinners' Guild

Marianne Heggteit.....*Board Chair*
Sayward Johnson.....*Board Vice Chair*
Kelly MacGregor.....*President*
Kathleen Schwass.....*Treasurer*
Ruth Cooper.....*Corporate Secretary*
Ann Sunahara.....*Studio Manager*
Elizabeth Watt *Education Coordinator*

In this issue

President's Message.....	p. 1
The Studio Manager.....	p. 2
Announcements.....	p. 3
Fibre Poker.....	p. 6
Who is Penelope?.....	p. 6
OVWSG 65 th Anniversary Party.....	p. 7
Ex and Sale News.....	p. 7
Local Events.....	p. 8
Marketplace.....	p. 9
Guild Records & Documents.....	p. 10
Last month's highlights and show & tell	p.11
June meeting minutes.....	p. 15

Meeting Info

This month's meeting:
Monday Sept 8th, 2014 at
7.30pm

Program:

Show and Tell & Fibre Poker

Next meeting:

Monday, Oct 6th, 2014, at
7.30pm

President's Message

How was your summer? Was there time for a rest, some down time? Was there creativity? Do you have stuff to share at Show and Tell? There is no specific program for September so as to allow more time for summertime Show and Tell.

September arrives like the lion of spring can and brings with it a hubbub of activity. I do believe that more work is accomplished in the fall quarter of the year than at any other time of the year. What will your September bring?

How does the year look to you? Are you ready? Will you jump in, feet first, and grab the oar and charge onward in your volunteer work? Does that include your guild work?

Volunteer. What is that? What is that to you?

Much of the world is held together by volunteers, and our guild – *your* guild – is one hundred percent reliant on volunteers. There is a contribution for everyone to make.

Let me remind you however that some volunteers give too much. Some volunteers carry more than their share. Are you one of those? If you are giving more than one day per week to the guild, that's too much!

Yes, some activities require a burst of many hours and days over a short period of time. But if every week you are spending more than one full eight hour day – that's too much.

I ask each of you to be mindful of the time you spend volunteering, for any organization. Be kind to yourself. Set limits. Say "no". It can wait until later.

Volunteering is supposed to be enjoyable. Your craft is supposed to be enjoyable. If volunteering is preventing you from participating in your craft, then look at the time you spend volunteering. Reset your priorities and your time schedule. Do your craft first. Be well! Enjoy Fall.

Kelly MacGregor

The Studio Manager

The purpose of this newsletter item is to provide members with an update on the Studio Manager position and ask for Expressions of Interest in the role.

First, some history – for which I am thankful to Ann Sunahara! I have taken the following two paragraphs from Ann's recent Studio Manager report to the Operational Coordinator Meeting held on August 27th.

When the Resource Centre - now called "Studio" - was first created, the Studio Manager position was also created. The intention was that it be a paid position like that of an Executive Director. When this proved unfeasible the job was left to volunteers. For a number of years Sue Quinn and Mary Morrison shared the role. The team of two set the precedent for an efficient and well-run Studio.

Ann Sunahara, our current Studio Manager, reports that in the past two years with the complications of the move, the position has morphed into a full time position. The end of the move has resulted in the end of many related activities. Recently an effort has been made to reduce the job solely to the management of the physical Studio space. A major change has been the creation of the Equipment Manager role, relieving the Studio Manager of those related tasks. Other activities are also in the process of being shifted to other roles.

So, in July the Executive revised the Job Description for the Studio Manager position.

The Studio Manager, under the supervision of the Board, is responsible for:

- scheduling the use of the OVWSG studio.
- compiling and maintaining the guild's overall inventory list of equipment and chattels, in collaboration with the Equipment Manager, Librarian and Yarn Coordinator. This inventory is to be submitted at the AGM each year.
- coordinating the physical set-up of the OVWSG studio.
- reserving of the Unitarian and HH meeting rooms for guild use.
- coordinating the scheduling of the work by tradesmen in the studio.
- maintaining petty cash for the OVWSG studio.
- checking, in person, the Studio a minimum of once a week
- liaising on day-to-day operations with Heartwood House for the Guild.
- maintaining the inventory of the guild studio keys and their holders.
- submitting reports as requested.
- other duties as assigned.

In June, in an effort to lighten her load, Ann Sunahara resigned from the Executive / Board. The Studio Manager is not automatically a Director of the Board / Member of the Executive. The Studio Manager and Workshop Coordinator are added to the Board by a special motion after each election at the AGM. So, Ann resigned from the Board but not her position as Studio Manager. However she stated in her letter of resignation that she would not stay in the role beyond May 2015.

Since June the Board has found the absence of the Studio Manager challenging, since so much of what we do involves the Studio. As a result, a decision was made to issue a Call For Interest to seek a replacement for the Studio Manager prior to May 2015.

So, do you have one day a week to devote to the role of Studio Manager? Can you see yourself conducting the tasks itemized in the above job description? Do you see yourself as the OVWSG Studio Manager? If so, here's what you need to do.

Submit a letter expressing your interest and include the following in your letter:

- Describe any work, volunteer or other experience that you feel contributes to your fulfilling this role.
- When could you be available to begin?
- Your experience with fibre arts and related equipment.
- Time available to complete the tasks for the role.

Submit your expression of interest by September 30th to me, Kelly MacGregor, President, at KellyMMacGregor@gmail.com.

After September 30th interviews will be held, a decision made, and orientation will be arranged.

Thank you all for your contributions,

Kelly MacGregor

Announcements from guild coordinators

Studio

Zippered Bedding Bags Wanted for Guild

Please bring the empty bedding bags -- the ones with zippers and, sometimes handles that live at the back of your linen closet once the bedding is on the bed. The Guild can use them for the accessories that our students need with the Dorothy and Voyageur Looms as in the pictures below.

Ann Sunahara
Studio Manager



Rental Coordinators

Welcome back weavers and spinners who have rented equipment during the summer. I will see you before the meeting to receive equipment you're bringing back.

Should you wish to request an extension to your current rental, please contact a Rental coordinator at rental@ovwsq.com before the meeting to determine availability and/or to reserve equipment. You will also be required to fill out a new 2014-15 rental form, whether you are renting new equipment or extending your current rental. You will be able to find forms online or in the Studio.

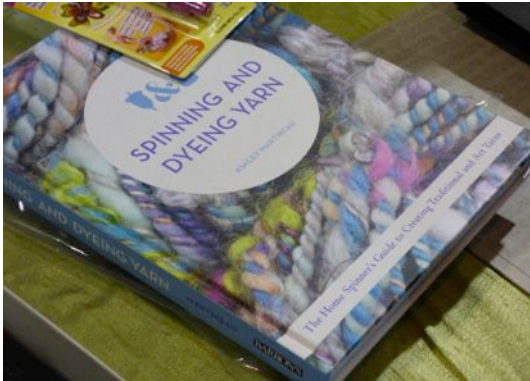
Nancy Gauthier
Loom rental coordinator

Library

Dear Guild,

Over the summer I have been working on getting the Magazines happily situated in their new holders. I am still working on labeling but hope to have that done by the September meeting! SO come in early and check out the Magazine section of the library!

We have also acquired a few new books and magazines over the summer. So come early and be the first to welcome them to the library.



Books taken out over the summer are due back at the September meeting (bring back books get back deposit checks), if you can't make the meeting let us know (library@ovwsg.com) and we will renew your book for a month or if it has been requested by another member make arrangements to have you drop it off.

The Library will be open at 5pm on the Monday of the meeting but I will be there before that. This will be a very busy meeting for the library so please bring your books back as early as you can.

All for now; Jan and the Library team.

Workshops

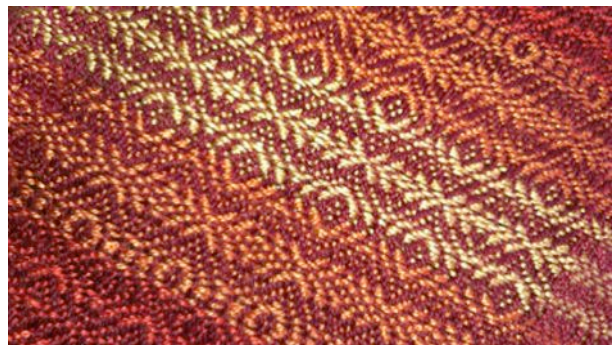
Jan, Terry and I will have started on the 2015 workshop schedule by the time you read this. There will be old favourites and many new offerings. Our instructors have provided us with a wide variety of topics for all skill levels.

There are still many workshops available to enjoy this fall. Beginning Weaving has been full for some time, but everything else has space at the moment, please check the catalogue available on the website.

Not in the catalogue, however, is a by request workshop:

Introduction to Natural Dyes - on Saturday September 27 at the Studio from 9 to 5. Cost will be \$70 plus materials. Amanda Carrigan will be teaching basic natural dyeing techniques for protein fibres including mordanting, harvesting, preparing plant material and dyeing with commercial cochineal and indigo extracts. Students will take home 5 skeins of yarn from 5 dyebaths. Materials fee (payable to Amanda) is \$20. There are still 2 spaces available. Please EMAIL me workshops@ovwsg.com with contact details and whether you would like to mail a cheque or have me send a PayPal invoice. I will use email time stamps in case there are more than 2 interested.

Elizabeth Watt
Workshop Registrar



Yarn Convenor

Yarn Sales and Group Orders

You might be interested in the following opportunities for stash enhancement:

-We will be holding a big sale of donated yarns at the September meeting. Our shelves are overflowing so please bring your wallets.

-Camilla Valley Farm group order of tencel, all weights (<http://www.camillavalleyfarm.com/knit/tencel.htm>). Deadline for payment is the September meeting. The Guild has ordered the sample cards but they are not here yet.

-Camilla Valley Farm group order of UKI perle cotton, all weights (<http://www.camillavalleyfarm.com/knit/ukimercerizedcotton.htm>). Deadline for payment is the October meeting. The Guild has ordered sample cards but they are not here yet. In the meantime, we have a UKI card from Jane Stafford in our sample drawer but JST carries fewer colours than CVF. These yarns are great for rigid heddle weavers too.

-Jane Stafford group order, yarn only (http://store.janestaffordtextiles.com/index.php?a=category&cat_id=3). Deadline for payment is the November meeting. The Guild has a complete set of JST samples in the sample drawer and they are beautiful. Jane Stafford offers free shipping on all orders over \$200, and free shipping and a 10% discount on all orders over \$500. We earned the discount and the free shipping on our spring order and everyone was pleased.

I would be happy to organise a couple more orders in the spring and would even consider US vendors if someone can volunteer to be my yarn mule since I don't have a passport. If you have suggestions for a group order, either Canadian or American, please let me know. However, there should be a good reason to order from a particular vendor, e.g. large discount or prohibitive shipping costs from

the States. Brassard does not offer lower prices on large orders. If you do not wish to wait around for a group order, I can think two local businesses run by Guild members who can order Louet weaving yarns: Wabi Sabi and Just knitting.

The Guild is very happy to accept donations of clean yarn you no longer need. I will keep putting it up for sale at most meeting and you can also come and purchase some off the shelves at any time. Please leave a donation for your purchase in the donation box. This is an important fundraiser for the Guild so give generously.

If you have comments or questions about the group orders, please email me at jzdunich@gmail.com

Thanks, Julie Anne Zdunich.

Ex and Sale Coordinator

The date is fast approaching for the annual Exhibition and Sale. Unfortunately, we still have two empty booths! All guild members please consider joining with another weaver, spinner or felter and renting one of these booths. I've seen your work, it is wonderful, and the co-op booth was overflowing last year.

We are again booked to set up a display at Wabi Sabi for the entire month of October, so please bring items to the September meeting so that we can take full advantage of this unique advertising opportunity.

On a different note, I would like to announce that this will be the last year that I will be organizing this event. So, if you are interested in taking on this job, this would be a good time to begin working with me to learn the ropes. We have so many new guild members I'm sure the infusion of new ideas and energy could only enliven the event.

Finally, please remember to pick up some bookmarks to help advertise this event, either at the guild meeting, a workshop or at the weaving or networking sessions.

See you at the meeting.

Anne Middleton

Fibre Poker

The Fibre Poker Challenge - I hope you have all been busy interpreting your cards into something dyed, spun, woven, knit, kumihimoed, basketed or felted. Please bring your cards and masterpiece(s) to the September meeting. Also please prepare a **very** short explanation of your process to share as part of the program. Failures are welcome too - after all it is part of the learning process. Looking forward to seeing the creations!

Shirley Browsky

Who Is Penelope?

As you have all seen, our newsletter now has a name: Penelope's News. But who is Penelope?

Penelope was the wife of the Greek hero Odysseus, the king of Ithaca. After he was summoned to take part in the Trojan War, the young men of the area moved into the palace in hopes of winning Penelope's hand and thereby Odysseus' fortune. Penelope devised a plan in order keep the suitors waiting: she told them she would only chose a husband once she had finished weaving a shroud for Laertes, Odysseus' father. For three years, she wove steadily during the day and unraveled it every night. She was eventually betrayed by a maidservant.



The Yellow Book - Volume 6 - Plate 3 by Patten Wilson - yellowjul189506uoft. Licensed under Public domain via Wikimedia Commons - http://commons.wikimedia.org/wiki/File:The_Yellow_Book_-_Volume_6_-_Plate_3.png#mediaviewer/File:The_Yellow_Book_-_Plate_3.png

OVWSG 65th Anniversary Celebration

We will be celebrating our 65th Anniversary on Sept 20 with demonstrations, music and food. You are invited to join in this event. The Guild has access to the large meeting area and the sanctuary of the Unitarian facility to accommodate all of us. The line-up, so far, includes presentations of the 100 inch loom, the Great Wheel, fibre preparation, various spinning fibers, spinning wheels and how they work, wet felting, dyeing. There will be a powerpoint presentation of our history, posters from our latest gallery showing and possibly some of the artwork for those who missed the show.

This day also coincides with International Spin in Public Day. The foyer is available to spinners for the spin-in.

This is such an amazing event! So many people have worked so hard for so long to bring us to this place LET'S CELEBRATE.

Doors open at 10:00 on Saturday Sept 20 at 404 MacArthur, and close at 4:00.

Open to the public from 10:00 a.m. to 2:00 p.m.

If you wish to contribute ideas or time, please contact Bernadette Quade or Carole Stuart at demo@ovwsg.com.

Ex and Sale (Oct 31-Nov 2) News

Ex and Sale Raffle

Hello Members! Tickets have been printed for the raffle and are 3 tickets for \$5 again this year. Tickets are stapled into \$10 booklets. We will have the tickets to sell/give out at the September meeting and at the Anniversary party on September 20th. We can accept cash (or a cheque made out to the OVWSG) either when tickets are taken out or when the stubs are returned.

The proceeds from the raffle are used to support our classes. They help us keep the workshop fees low and to run some workshops with only two or three students. Last year we did not sell all our tickets. Ticket sales brought in \$1770. After paying the raffle license and bank fees that left us with \$1,641 to use towards instructor fees. However, it should also be noted that the guild pays for printing the tickets and for supplies towards the prizes from the general fund. Which results in a further reduction in the profit from the raffle. We have some awesome prizes this year and I am hoping we can exceed these numbers by selling all our tickets prior to the draw.

The success of the raffle relies on our members selling tickets. So please pick some up and sell them to your family and friends.

Carlene Paquette

Ex & Sale Community Table

Planning of Exhibition and Sale in November is in high gear. Last year the Community Table was very successful with sales over \$1,000. The addition of more display equipment, relocation of the booth, and the fantastic products produced by our members gave the booth a professional appearance. We had a great variety of spun yarns, roving, handmade spindles, felting, knitting and weaving. Thank you to all who participated last year.

The Community Table is open to all members to participate. Your products must be submitted for the jury process (we will help you with this) and we ask that you volunteer a few hours to “man” the booth. A commission of 10% is charged on the total of your sales. This is a good opportunity to sell a few of your excess items and make a little money to feed your habit. It is a fun, wonderful way to get to know other members of the guild and a great source of inspiration for your next project.

Next time you are weaving, spinning or felting do a little extra for the Community Table. We will have sign up sheets at the monthly meetings. We already have several members signed up to participate. I will be available at the September meeting to answer questions and you are welcome to contact me at kathleenschwass@hotmail.com or treasurer@ovwsg.com

If you have some samples of your completed work, bring it to the September meeting and I will get you in touch with the jury member.

Kathleen Schwass

Wabi Sabi Ex and Sale window

I am looking for submissions for the Wabi Sabi shop window this fall. I will be starting to gather some of your products to promote our Ex and Sale on October 31st to November 2nd. Items will be accepted starting at the September meeting. Help us make the display look colorful and entice people to come and visit!

Thank you for your assistance,

Carole Stuart

Local Events

Wabi Sabi Louet Demo Nights

Wabi Sabi is having representatives from Louet at the shop on October 2, 2014.

from 2 to 4 - Demos on the Jane and the David Loom

from 6 to 8 - Demos of spinning wheel

Event is free of charge but registrations are required.

Middleville Fair – Sept 13

Rural Eastern Ontario used to be a major centre for both household and industrial spinning and weaving. Sadly, local interest in the fibre arts has faded. I'd like to revive that interest, and one way to do that is to build up the entries in the Weaving and Spinning categories of the Middleville Fall Fair. I'm looking for as many entries as I can find, to show people the work that is being done around here, the range of fibres being used, the types of yarns that are being produced, and the weaving techniques being used. There are six entry categories for Spinning, and eight for Weaving. You can see the class list at:

http://www.middlevillefair.ca/spinning_weaving.html

If you have any work that would fit into those classes, please consider entering! I'll be glad to help you deliver/retrieve entries, as well as answer any questions you may have; I can be reached at susan@susanberlin.ca or by phoning 613-259-5036. I really want to inspire a revival of spinning and weaving in this area!

And if you've never been to the Fair -- it's one of the best small, non-commercial Fairs around. This year, it will be held on Saturday, September 13 (yes, that conflicts with the first day of the Almonte Fibre Festival, but the Almonte event runs Saturday AND Sunday, so you can get to both of them!) Moreover, the Fair is held in conjunction with the Middleville and District Museum, with its fabulous collection of artifacts of local history -- including a pegged barn loom that used to travel from household to household, being set up in each long enough for the weaver to create fabric from the yarn women had spun over the winter.

Susan Berlin

Marketplace

The Marketplace portion of the newsletter is used to promote and assist its members. **Current members of the OVWSG can advertise at no charge.** Some restrictions may apply as to space availability and file restrictions.

For Non-Members: \$15.00 for the first 25 letters. \$0.28 for each additional word. \$2.00 per image. Contact Natalie at marketplace@ovwsg.com or newsletter@ovwsg.com

Loom For Sale

Scandinavian type floor loom, possibly a Toika , 4-shaft, 36 inches wide (90 cm), with overhead beater. Needs assembly. \$ 200 or best offer. Contact Judith Rygiel, 613-825-4155, judith_rygiel@look.ca

Warping Mill For Sale

Large Leclerc Warping Mill, in perfect condition: \$200. Mill gives 4 yards per turn, and can make a warp up to 50 yards long. Arms can be folded flat; bases are 2 feet wide. Placed against a wall, it doesn't take up too much storage room -- but you need space to open it for use, and I have no space! Can be taken apart easily for transport. Please contact Susan Berlin: susan@susanberlin.ca or 613-259-5036



Raw Icelandic fall fleeces for sale

Fall shearing of our Certified Organic Icelandic sheep will be in early September. We will have several lamb and mature fleeces available in a variety of colours: white, black, grey, caramel, and light browns. These fleeces are great for hand spinning or felting. We charge \$22-\$30 per pound for raw, whole, very thoroughly skirted, clean fleeces. Pictures of our fall fleeces from last year are on our website, www.RocksEndFarm.ca. If you are interested in a fleece, or if you'd like to come out to see the shearing and have first pick of the fleeces, email me at Erin@RocksEndFarm.ca or call 819-568-2131



Guild Records and Documents

Recently Ruth Cooper and I made order out of chaos in the Guild's filing cabinets and I am happy to report that all our documents are now in new, clearly labelled and colour coded files. We divided the files into five categories within which files are arranged in alphabetical order as follows:

1. Corporate files (red folders) include for example
 - a. Constitution
 - b. Incorporation files
 - c. Membership information
 - d. Minutes of Executive and other minutes
 - e. various other files that relate to the OVWSG as a corporate entity
2. Financial files (green folders) include
 - a. Financial statements
 - b. Audits
 - c. Bank records
 - d. Raffle files

e. various other files relating to the financial management of the Guild

3. Programming (blue folders)

- a. Anything relating to workshops
- b. Library
- c. Monthly meetings
- d. Demos
- e. Exhibition and Sale
- f. 100" Loom projects
- g. General files relating to ongoing guild programs

4. Administration (yellow folders)

- a. Files relating to Heartwood House, including our lease
- b. Insurance
- c. Rogers
- d. All documents relating to the move
- e. Other files that relate to the guild's ongoing operation.

5. Equipment (white folders)

- a. Records of equipment purchases and sales
- b. Fiberworks PCW and ProWeave documents
- c. Inventories
- d. General files relating to equipment and inventory.

In order to maintain our files so that documents can be accessed easily we ask everyone to:

- Not remove any files from the filing cabinet without informing Ruth Cooper or me AND to leave a note in the hanging file indicating the name of the borrower and the date the file is expected to return.
- Put any document that requires filing in the black tray on the desk next to the filing cabinets – DO NOT FILE YOURSELF OR OPEN A NEW FILE.

Lastly, we ask that guild members who maintain guild documents, they are currently not working on, to the Studio so that they can be filed either in the filing cabinets or with other archived files.

Thanks,

Ruth Cooper and Mandy Heggveit

June's program

Kelley's trip to Okinawa:



Show & Tell

Natalie's scarf and blanket



Louise's silk weaving detail



Wilf's bench transformation:



Mandy's book:



Lori's handspun:



Ann's spindle-spun rolags:



Celine's home-built electric spinner:



Liane's fibre:



Julie's basket:



Lynda's basket:



Jean's shawl



June meeting minutes

General Membership Meeting June 2, 2014

7:30 pm, Heartwood House

Chair of Meeting: President Kelly MacGregor

- Chair welcomed all old and new members and any guests.

Business:

- Review of agenda.
- Anne Middleton announced that the Ex & Sale has 2 larger booths available and one booth at \$144 that new spinners and weavers might want to rent collectively.
- 65th Birthday is September 20, 2014. Bernadette Quade has reserved the meeting area and has ordered a party banner, table drape and demo banner as well.
- Ann Sunahara announced 2 looms are for sale (4-harness Clement and 27" counterbalance Mira.) Also there is a Scottish Haldane spinning wheel for \$200.00. Sale bids close June 4th at midnight.
- Natalie Shumovsky has sample cards from Lunatic Fringe for hemp and alpaca.
- Denise Furukawa mentioned that in Ravelry mentioned that Alvin Rainer is retiring and Colbourne shop, "Our Spinning Heritage" closing, so Canadian spinning wheels for sale.
- Open Studio – on Tuesdays 11- 3 pm. Fridays are dropped when no weekend courses.
- Voting sheets given out for new newsletter name. Result later was *Penelope's News* (12 ½ votes) and close second was Spindles and Heddles (11).

- **Standards Committee** presented.

Weaving Criteria (Mary Morrison) :

- *General appearance of item is pleasing and suitable for intended use (e.g. scarf should be drapeable, not stiff or plain weave, and upholstery should be firm.)*
- *Yarn is suitable for use – soft for wearables, strong for rugs or upholstery, able to withstand much washing (e.g. placemats, tea towels).*
- *Shrinkage accounted for.*
- *Suitable weave structure for item – firm twill, or open, lacy shawl.*
- *Weaving free of noticeable mistakes. Clean edges.*
- *Finishing – washing, pressing, fringes, hems appropriate for item.*

Felting Criteria (Ann McElroy):

- *use appropriate wool for the right purpose (i.e. not merino for slippers)*
- *felting done well, colours, pleasing.*

Spinning Criteria (Judy Kavanagh):

- *consistent, even spinning ply thickness.*
- *Appropriate choice of fibre blending in plies.*
- Jan Scott asked that any over-due books be returned, so others can use them. Please supply library with any resource links, suppliers, etc.
- Guild Challenge – Shirley Browsky introduced “Fibre Poker”. 2 decks for Weavers and 2 decks for Spinners. Each person dealt 5 cards, involving design element, pattern, colour, weave type, plies, finishing, etc. In this Fibre Challenge, each player must use all their 5 cards in their design. Each player is allowed 1 discard card for exchange.

Program:

Kelly MacGregor presented her trip to Okinawa, the largest island south of Japan. Considered the vacation island for Japanese, it has good beaches and a US military base. The Museum there had weaving equipment and the Naha City Traditional Arts and Crafts Centre had Lacquer Ware, Glass blowing, pottery, shuri cloth, begota dyed cloth and Roku weaving, that is like Batik, but washed in the ocean. The Japanese also use Bashō fibre, or banana fibre, that does not stick to the body. It is woody and hard to spin.

BREAK for 15 minutes – refreshments and mingle.

SHOW AND TELL:

Natalie Shumovsky – Tencel warp and cotton weft scarf and wool blanket.

Louise LaBerge – Natural dyeing and weaving at the Craft Centre in Laos, and visited the Artisans of Angor and their silk weaving.

Wilf Gilchrist – made a weaving bench from poplar wood for \$97.00

Mandy Heggveit – “The Brown Book of Weaving Drafts” (Collection of Weaving patterns of N.C.), from the Art History Centre in Clayton, NY.

Lori Rowsell – Spun 220 yds of Yarn and wooden buttons from Terri Flaherty from Chelsea, QC

Terry Nelson – yarn from St. Distaff Day

Ann McElroy – Hookers necklace and rolags from St. Distaff Day.

Liane Thiry-Smith – yarns, hand-dyed merino, spun wool (yarnsmith.ca from NS)

Céline Groleau – Homemade electric spinning wheel with weed-whacker motor and variable speed.

Julie Anne Zdunich – St. Distaff basket.

Lynda Beaudoin – St. Distaff basket from braided Siberian iris leaves (dried and re-wetted) twisted and plied.

Jean Sharp - shawl

Meeting Adjournment by Chair at 9:30.