

# PENELOPE'S NEWS



April 2016

The newsletter of the Ottawa Valley Weavers' and Spinners' Guild

Marianne Heggteit.....*Board Chair*  
Sayward Johnson.....*Board Vice Chair*  
Kelly MacGregor.....*President*  
Kathleen Schwass.....*Treasurer*  
Ruth Cooper.....*Corporate Secretary*  
Sandra Jager ..... *Studio Manager*  
Elizabeth Watt.... *Education Coordinator*

The Ottawa Valley Weavers' and Spinners' Guild (OVWSG) is a non-profit, incorporated organization, whose mandate is "to encourage its membership to achieve a high aesthetic standard and technical expertise and to promote and foster the knowledge of, interest in, and appreciation for historic and contemporary weaving, spinning, and their related fibre arts."

## President's Message

### In this issue

President's Message.....p.1  
General announcements.....p.2  
Guild Coordinator announcements...p.3  
Welcome to New Members.....p.5  
Events.....p.5  
At Tale of Two Wheels.....p.7  
Photos from March Presentation.....p.8  
Show & Tell.....p.9  
Marketplace.....p.10  
March meeting minutes.....p.11

### Meeting Info

***This month's meeting:***  
Monday April 4th at 7.30pm

#### ***Program:***

Marie-France Gosselin will give a talk about her textile trips to Guatemala

#### ***Next meeting:***

Monday May 2nd at 7.30pm

As I write this we are all waiting to see if the spring storm that is forecast really becomes a storm. It's all part of this transition season. And April reminds me that in May we have our Annual General Meeting (AGM) and there will be several transitions for our guild.

Although I as President am eligible to run for one more two-year term, I have decided not to do so. The driving distance is increasingly problematic. It really makes more sense for the guild to have a President that lives in Ottawa! I intend to stay very active in the guild, working on ad hoc projects as time and executive direction allows me to.

I have been unable to complete the Strategic Plan as I had hoped. I expect this will be my first ad hoc project: to complete the Strategic Plan and present it to the new Executive in the fall.

The Executive has been working on a succession plan to ensure that all positions are filled. Several members have been approached to fill positions while call-outs for members to fill vacancies have met with several responses. Together, these activities will ensure a continuation of a complete committee to operate your organization.

Recently, I was rather disturbed to hear our organization and its Executive described as "autocratic". There are vacancies in a variety of positions; if you need a stronger voice I encourage you to become involved. At each meeting members of the Executive are introduced so that there is a face that goes with the name. Executive members can be sent an email through the website. The name, address, phone number and email of Executive and Operational position members are on the membership list. Executive member names are listed at the top of each monthly Newsletter. Somewhere there is a suggestion box.

Members elect the Executive at the AGM to represent their interests in operation of the guild. If you need to be heard, please access any of the avenues listed above to voice your concerns. And, attend the AGM and vote.

Mary Morrison and Julie Anne Zdunich have agreed again to organize nominations for the May AGM. They will contact each person currently in a position to see if they are willing to continue or want to step down. In addition, they will be soliciting for vacant positions. If a position is not vacant, any other member is eligible to put their name forward for that position. The intention is to provide for a fair and democratic vote.

As we transition into summer I hope your plans are shaping up for your activities. One of my goals is to finish a bunch of projects. Sometimes that seems to be the hardest part. It's all part of the transition, the transformation of crafting something from fibre.

Kelly

## General Announcements

### Membership Fees

Membership Fees for individuals will be going up from \$40/year to \$50 / year, effective for 2016-2017 year membership or renewal.

### Monthly Programs

The program for April 4<sup>th</sup> is a presentation by Marie-France Gosselin on her most recent textile trip to Guatemala and promises to be feast for our eyes.

To provide a balanced program schedule for 2016-2017 we are calling on all guild members to send us proposals for interesting programs. What we are looking for are topics that relate to weaving, spinning and fibre in general. To follow up on suggestions we need presenters' names, their expertise and contact information. Please send your proposals to Karin ([khbhendriksen@rogers.com](mailto:khbhendriksen@rogers.com)) or me ([heggteit@rogers.com](mailto:heggteit@rogers.com)).

### Request

I would like to know if anyone is planning on going to Upper Canada Village this summer. I spoke to Mr. Peter Winsinck, the oxen handler who will save the oxen hair for us (the OVWSG) if someone can pick it up.

I also spoke to someone else at the Farm Show who is looking for a Drum Carder with coarse cloth, if anyone has one they would like to sell please contact me at [merilyn@primus.ca](mailto:merilyn@primus.ca)).

Merilyn Mulligan

## New Mini Mill in the Ottawa Area

In the Ottawa area near the town of Perth is a new, awesome mill setup from Belfast Mini Mills: Noble Fibre Mill in Lanark Highlands. Currently setting up operations for washing, roving, felting, and a few other products, you'll start seeing them pop up at local events and the Perth farmers' market. Mostly producing their own product, they will also be working with some local farmers. I'd like to welcome this young couple to the local fibre art community. If you would like to see some of their very first work out of the mill I will have some roving at the April meeting.

Samantha V.



## Announcements from guild coordinators

### Ex and Sale – Simply Unique

Mark these dates, **November 5th and 6th!**

#### Looking for volunteers

Putting on such a wonderful event it takes a small army. I am looking for volunteers to organize the event. We would work together as a team and support each other. I look forward to hearing from you.

#### Vendors' information

I've sent out **the Call Out for Vendors for our 2016** event. We are looking forward to an awesome event again this year. I apologize for my typo in the application. The proper email is actually [guildsale@ovwsg.com](mailto:guildsale@ovwsg.com)

Applications should be received with payment by May 4, 2016. If you have any questions do not hesitate to contact me.

Carole Stuart  
Simply Unique Sale  
[guildsale@ovwsg.com](mailto:guildsale@ovwsg.com)

## Workshops

The Tom Knisely "Sakiori and Zanishi: Japanese Rural Cloth" workshops are just about full. I have space for 1 more in the June 7<sup>th</sup> & 8<sup>th</sup> (Tuesday/Wednesday) session. I am also keeping a wait list, just in case of cancellation, so go ahead and register.

Looking at the next month the following workshops still have spots available:

Art Batt Construction - Saturday April 2 - has only one registered, so is in danger of cancellation, if you want it to run please register by Tuesday, March 29

Basket Handles - Tues April 5th, also in danger of cancellation, needs 3 more to run, please register quickly.

Wet Felted Bird House - Saturday April 9 - needs two more at least to run

Intro to Spinning Part 3 - Gaining Control, Saturday April 16, 2 spots available

Intro to Spinning Part 1&2 - Thursday evenings April 22, 28 and May 5 - 1 spot available

Dainty Lace Delights Sunday April 24 and Saturday April 30 - needs at least 3 more to run.

Intro to Spinning 1, Spindle Saturday May 7 6 spots available!

Plain Weave Frivolities, Acadian Style Saturday May 14 - needs 3 more to run

More info available on the website. Please use the form on the website to register for workshops.

Beth Briggs, our By Request Coordinator, is working on scheduling extra sessions of the very popular "Unique Warp Painted Scarves". She needs two more to schedule a 3rd session. If you are interested, please use the "lonely learners" form on the website to give her your details.

## Library

### **Hours: On the Monday of the meeting- 9am to 7:15pm**

If you cannot make the meeting (you have a hot date or there is a horrible storm), email the Library (you have the email address on the date due reminder slip in all the books) or [jsrmt@hotmail.com](mailto:jsrmt@hotmail.com) will work too. Otherwise you get to contribute to the new book fund (overdue fine) \$1.50 per item per month!!

### **Bringing back a book:**

On the meeting Monday one of the librarians (usually Terry) will have the book return box. It contains all the cards of library items that are out. They are filed under the borrowers **First** Name. When you return your books, DVDs or Magazines you will remind us of your first name and we will pull out the cards. We will re-card the items for you and you will be able to take out 4 items due the following meeting.

### **Taking out a book:**

To take items out of the library you need to be a member in good standing (no overdue items) and be able to fill in the library card correctly. It's very tricky so be careful. You need to print the month and year of the next meeting (**May 2016 or 05/16**). In the next box you need to print your **full name** and your **phone number** (if your phone number doesn't fit you can use the line below). You will give your carefully filled in card and the date due slip (from the back pocket of the book) to the librarian handling outgoing books (usually Alison). The librarian will stamp and return your reminder slip and file your cards in the outgoing card box alphabetically under your first name.

### More time to peruse the Library:

We have had a request for **more daytime access to the library** so Terry has very kindly volunteered. Terry has been in on most Wednesday afternoons with the library open for your perusal. Please Confirm with Terry that you're planning on dropping in since we have not had much attendance. Ann or I have been at almost every social over the last year. We have had a mixed reaction from those attending about the library being open. Since the library takes up a bit more space when open and the spinners would also like the same space, it may be best to leave it closed unless we have a request to look at books. Books can be dropped off at any social or any time you are in the studio. Just place them in the book return box located near the double doors. Please Email to let us know you dropped something off if you are not returning them at a social.

### Need for Volunteers:

We have a volunteer who is looking at the friendship coverlet project. We still need someone to tackle reformatting the information in the 2 binders of samples donated to the guild. You may need knowledge of ether computer drafting software or excel and word. Also being a weaver will help. This is a big project and can be worked on in sections or as a group.

Come early to the Library remember we usually have candy!! All for now; see you soon!

Jan and the Librarians

## Welcome New Members!

Laura Lawrence  
Kari Rogstad  
Christine Desrochers

## Events

### April 16, 17 **Uncomplicated Weaving Class**

10 am to 4 pm each day in my new studio near Chesterville, Ontario. Each student will make a warp, set up a loom and weave a project. Cost is \$165, which includes materials. Please enroll 2 weeks in advance, with full payment at that time.

Due to popular demand, another class is available on April 23, 24.



### May 29th **Berry Basket Workshop**

Make a small basket with a handle, using the Stake and Strand technique.

Cost is \$60, which includes materials. Please enroll 2 weeks in advance with full payment at that time.

Janet Whittam  
91 Erin Ave., PO Box 253  
Chesterville, ON K0C 1H0  
[www.handweaving.ca](http://www.handweaving.ca)





### **TWIST 2016 Program: official launch in April!**

Our 5th edition will be full of surprises and novelties! Watch for our workshops that will be held over the course of four days, starting just before the festival, August 18-21. We have once again, great vendors this year, a great team, all we need is you! The full program will be up in April. Until then, follow us on Facebook page or keep a watch on our website for news! Find us on Twitter, YouTube and Instagram too!

The Twisteers

Questions? Write us [info@festivaltwist.org](mailto:info@festivaltwist.org), or call (819) 981-0023, Monday to Friday between 9AM and 5PM!

### **Lansdowne textiles festival – Saturday, June 25 2016**

The focus of our festival is to bring various textile artists to demonstrate their artistry, explain to the audience what they are doing, and perhaps let them try their hand at it as well. We are looking for weavers, spinners dyers, rug hookers, quilters, needle artist, basket makers, lace makers, anything to do with textiles and of course vendors that support the artists.



### **Fibre Fling 5 – Textile Art Show and Sale, April 8 - 9, 2016**

Kitchissippi United Church, 630 Island Park Drive, Ottawa, Ontario

Hours: Friday 10 am-8 pm and Saturday 10 am-5 p.m.

Admission is \$5.

High Tea will be available on Saturday for an additional \$10.

Light refreshments are available throughout the show

Out-of-the-Box Fibre Artists and the Kitchissippi United Church invite you to a show and sale of fibre and mixed media art on Friday and Saturday in the church hall. Our membership includes a wide range of fibre artists, many of whom belong to area guilds as well. At last year's show, 44 artists exhibited 253 artworks - art quilts, mixed media, framed works, felting, wearables, embroidery, dolls, beadwork, jewelry, rug hooking, and more. The depth, quality and originality of the work are inspiring!

As well, an extensive Sales area gives visitors an opportunity to purchase a variety of unique items including small framed artwork, wearables such as scarves, hats, and bags, jewelry, cards, handmade books, and an array of felting, stitchery, knitting and crochet.

Volunteers from Kitchissippi United Church will serve a delicious high tea on Saturday, April 9th. Over the last 4 years, this partnership of Art and Tea has raised over \$15,000 for the Stephen Lewis Foundation!

For more details contact Rita Rottman ([ritarottman@sympatico.ca](mailto:ritarottman@sympatico.ca)), or visit [www.out-of-the-box.org](http://www.out-of-the-box.org)

## Member Articles

### A Tale of Two Wheels

It started several years ago: I was looking for a simple, inexpensive spinning wheel I could use in teaching spinning to beginners. I checked Kijiji for weeks without finding anything that would suit, and then one day I saw a double-drive wheel for sale in Gatineau for \$50. It certainly wasn't what I was looking for – but after all, a wheel for \$50 had to be of some interest, no?

So I went to see it. The owner was very nice. He explained that his family had lived in the country until recently, and bought the wheel for 'farmhouse decor' – but now that they were in a new, modern townhouse, the wheel was out of place.

I pulled out my test drive-band, and the man was astonished: 'Are you planning to actually spin on it?' Indeed I was, especially as the wheel spun true and didn't have any obvious problems. I paid the money, put the wheel in my car, and took her home. She turned out to be an Aram Paradis Canadian Production Wheel, which I discovered courtesy of the wonderfully knowledgeable people in Ravelry's CPW Group. The wheel had its original coat of yellow paint, covered with grime – so much so that it took me a while to find the stamped 'A. Paradis' on the front of the table. She clearly had been one of the \$5 stripped-down wheels (no beading on the spokes, the very simplest turnings everywhere else, and wooden treadles) that had been produced for farm wives who needed to spin miles of yarn every year to keep their families warm in winter. The treadles have been shaped to the spinner's foot, and very nearly worn through.

I started reading through the CPW posts to learn more about the wheels – and was pretty surprised to find that a few of the Quebec makers had produced double-treadle wheels; I hadn't realized there had been any DTs made that long ago. And, of course I wanted one. I promised myself it would be the only addition I'd ever make to my existing wheel collection. If I could find one; if I could find one somewhere closer than Quebec City; if I could find one I could afford.



I haunted all the likely places for three or four years. Late last year, a friend of mine who knew I was looking for a DT CPW told me to take a look at a wheel on Kijiji. Actually, I'd seen the listing, but the photo was so bad that I missed the fact that it was a double-treadle. And it was in Kanata! And I could afford it! (I'm not going to tell you what I paid for it, because those of you who are CPW aficionados will hate me; suffice it to say, I was very, very lucky.) I barely checked the wheel, just eyed her up and down and took her home.

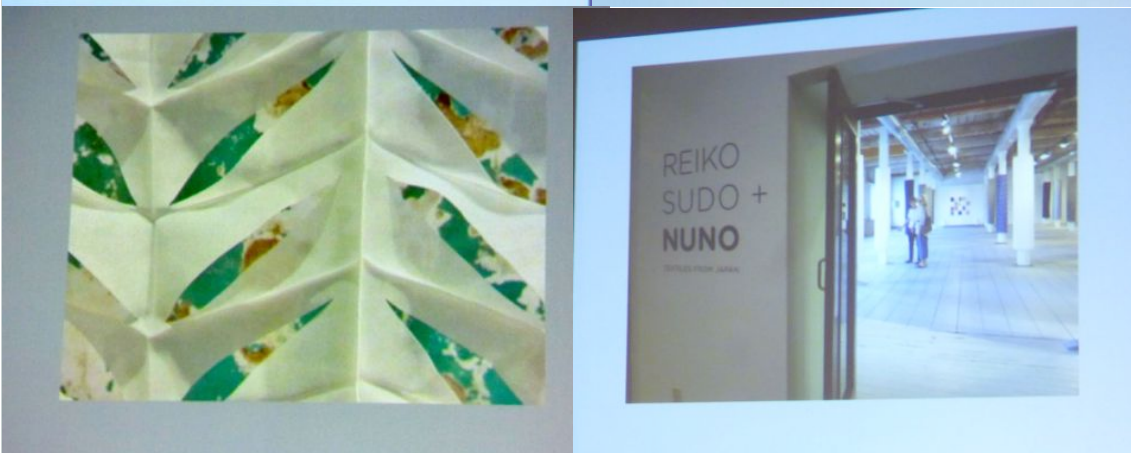
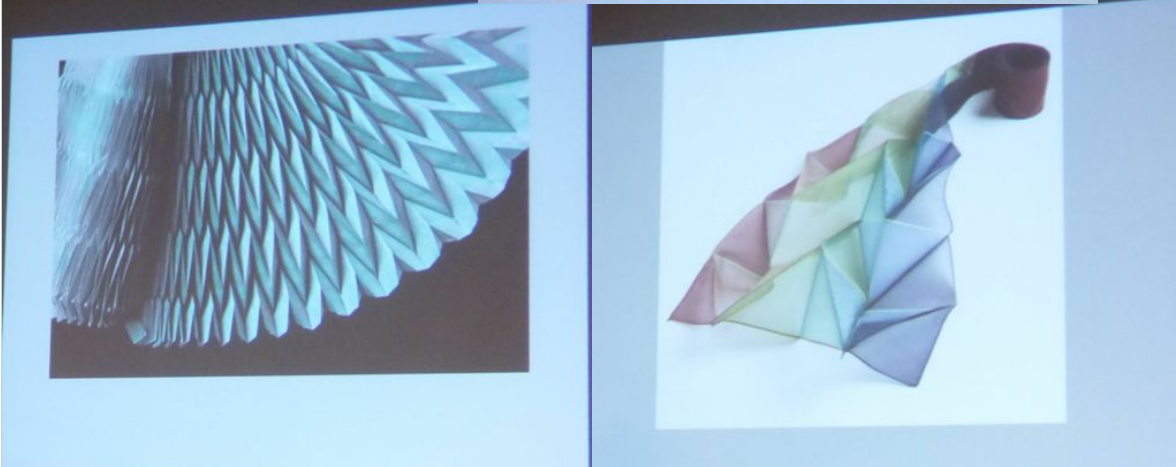
Like all CPWs, she was graceful and beautiful, but she had been subjected to a rather sloppy after-market paint job by an antique dealer who knew that CPWs were often painted – but not this one. I decided to strip the paint off and return her to her native state. It took longer than I had thought it would, of course, as did the sanding that followed and eventually, the several layers of wax rubbing – but there she is, now, back in her glory. Next weekend she's going to be gifted with a little wooden support for her treadle rod, and then, off we go!

Susan Berlin



## Photos from the March meeting program

Alan Elder discussed Japanese textiles and the 2014 exhibit at the Mississippi Valley Textile Museum.





## Show & Tell



Ann's scarves;  
Elizabeth's Swatch  
Maker loom;



Liane's tea  
cozy;

Kathleen's  
shadow  
weave  
blanket;



Kathleen's satin-  
bound 100" loom  
blanket; Mandy's  
100" loom blanket  
with boucle  
window pane  
sections; Ann's  
felted shawl;  
Melanie and  
Patty's scarves.



## Marketplace

The Marketplace portion of the newsletter is used to promote and assist its members. **Current members of the OVWSG can advertise at no charge.** Some restrictions may apply as to space availability and file restrictions.

For Non-Members: \$15.00 for the first 25 letters. \$0.28 for each additional word. \$2.00 per image. Contact Natalie at [marketplace@ovwsg.com](mailto:marketplace@ovwsg.com) or [newsletter@ovwsg.com](mailto:newsletter@ovwsg.com)

Ottawa now has a **SpinOlution** dealer! I'm very excited to be carrying their wheels as an addition to my fibre arts business, Trailhead Yarns and Fibre. In the next weeks I will be receiving the King Bee as well as the Pollywog. If anyone would like to try them out, send me an email. If you have any questions at all you can catch me at a meeting or send me an email at any time.

Samantha V.  
Trailhead Yarns and Fibre  
[trailheadyarns@gmail.com](mailto:trailheadyarns@gmail.com)



**For Sale:** Brand new Kromski Polonaise spinning wheel. Comes with jumbo flyer with bobbin, four bobbins and a lazy Kate. I do not have the room for it. \$1000 or best offer.

For information please contact Laura at [613 866 5964](tel:6138665964), or email at [Laura.lawrence@live.ca](mailto:Laura.lawrence@live.ca)

### Yarn Sale Continues!

Wool, linen and other yarns, many copies of Handwoven magazine.

Please contact Mary Morrison to arrange a date/time to shop her stash: 613 830 9992 or [morrmy@bell.net](mailto:morrmy@bell.net)

Mary Morrison, 841 Scala Ave., Orleans (east on Innes, past Tenth Line, Turn south on Portobello. At stop sign at school, turn left on Scala. #841 is about halfway down the road, before it turns).

### Wanted

Back-up newsletter editor in case I am ill or unavailable. Must have a computer, colour printer and Microsoft Word 2011 or later.

Contact Natalie at [newsletter@ovwsg.com](mailto:newsletter@ovwsg.com)

# March 2016 Meeting Minutes

## General Membership Meeting 7 March 2016

Chair: Mandy Heggtveit

- Chair welcomed all old and 2 new present members and 2 guests in attendance. **(About 65 members in attendance.)**
- Executive was introduced. Announcements to be made after the break.

### Program:

Alan Elder, Manager of First Peoples in Early Canada at the Canadian Museum of History, introduced his talk on "*Reiko Sudo and Nuno*". With a gallery background and strong interest in Japanese Traditional Arts and Textiles, Alan talked about the connections between contemporary and 17-19<sup>th</sup> century Japanese art. Showing us the work of Japanese textile artist, Reiko Sudo, which was displayed at the Mississippi Valley Textile Museum in 2014, he explained some of the *Nuno* technique, which means "textile" in Japanese. The textile pieces are often placed on a temporary "fabric" made with water-soluble yam starch. They are then stitched together artistically, using various threads and designs. The yam starch "fabric" is then dissolved away to expose the lacy nuno. Starting a small shop in 1984, Reiko Sudo's Nuno work soon became popular and she was able to expand with more designers. She made the fabrics for the Mandarin Hotel in downtown Tokyo, among others. The year of the exhibition in Almonte was also her 30<sup>th</sup> anniversary of her shop and designs. Using pillars in the gallery space to exhibit the yardage, it combined the use of the pillars "wearing apparel" with their "architectural space". Several pieces of nuno pieces were described, such as *Tiggy*, with long cotton floats; *Polygamy*, of origami pleats woven into the fabric with a jacquard loom; *Scrapyard*, made by laying rusted objects, like wet steel plates, saw blades or nails onto the rayon fabric; *Camaboko*, a jacquard woven fabric of cotton stripes and solids; *Tannabata*, (a Japanese festival, on July 7<sup>th</sup>, where wishes are tied to tree branches) was heat-pleated openwork, looking like branches and *Sudi hogi* (meaning patchwork) was a chemical lace piece, utilizing left-over pieces of textile, layered on and sewn together while a water-soluble cloth holds it together. At the back of the MVTM gallery, there were samples of all the fabrics that people were allowed to touch, and information was also there about the manufacturing techniques of each piece.

Alan explained that when putting together exhibitions, one wants the visitor experience to be rich and he tries to "animate the show" somehow. It was an interesting talk with a slideshow of incredibly designed and woven fabrics.

### **BREAK** – Refreshments & Socializing

### Announcements:

- Membership Fees for individuals will be going up from \$40/year to \$50 / year, as of May 1<sup>st</sup>, 2016. Family membership will be \$65. The fees have not changed in 10 years and our expenses have increased. A few years ago, we had a \$30,000 budget, but now we have a \$50,000 budget. The Executive felt that



with our rent going up 5%, being charged HST on most transactions now, and with electricity, cleaning and insurance costing us \$2,400/month, our present membership fees cover only 3 months of our year. Yarns, workshops, raffle, donation sales and auctions augment this, as does our present grant. Mandy explained that our guild is a responsible organization that has no “frills”, and it is felt that it is a needed and justified increase.

- Elections will be held at the May Annual General Meeting (AGM). We still need a Grant writer and secretary. Laurie Harkin-Chiasson has volunteered to be studio assistant.
- Carole Stuart has confirmed the Ex and Sale date for Nov. 5-6<sup>th</sup> next year. The set-up will be on Friday, Nov. 4th (6-9 pm) and sale on Saturday (10-8) and Sunday (10-5). Volunteers will be required. (High School students could get volunteer hours.) The raffle will include an overshot coverlet and the draw may be on the Monday (Nov. 7<sup>th</sup>) at the general meeting this year to sell right through to the end of the sale. ([guildsale@ovwsg.com](mailto:guildsale@ovwsg.com))
- Farm Show is tomorrow and the Maker's Fair (Technology and Traditional crafts are displayed)
- Dickinson Days will be coordinated by Terry Nelson this year.
- Roebuck Antique Festival is in May. We will need our own tables and canopy.
- Anne Middleton wants to set up a team for fundraising ideas. (Calendars and cards have been suggested.)
- Mary Morrison has donated acrylic yarn for CHEO Linus baby blankets, if people are interested in making some, they are not to be knitted or crocheted and no fringes are allowed.
- Anyone interested in weaving on the 100” Loom for the Overshot coverlet, please contact Ruth Cooper.

#### SHOW & TELL:

Ann Middleton	Handspun and woven scarves in silk, mohair and blends.
Elizabeth Watt	Swatch maker loom from Pearl & Loop in Texas. Heddles made from knitting needles.
Liane Thiery-Smith	Tea cozy knitted with a felted lid.
Kathleen Schwass	Shadow weave blanket with Briggs & Little wool and 100” blanket with Harrisville wool.
Mandy Heggtveit	100” Loom blanket with boucle warp & weft inserts.
Melanie Lukach & Patty Hennesey	Scarves from the Introduction to Rigid Heddle class.
Ann McElroy	Nuno Scarf, triangular-shaped with reversible sides.

**NEXT MEETING:** Monday, April 4, 2016. 7:30 pm.