

# PENELOPE'S NEWS



February 2017

The newsletter of the Ottawa Valley Weavers' and Spinners' Guild

Marianne Heggveit.....*Board Chair*  
Sayward Johnson.....*Board Vice Chair*  
Ruth Cooper.....*President*  
Laurie Holcombe.....*Treasurer*  
Candace Vanskiver....*Corporate Secretary*  
Laurie Harkin-Chiasson...*Studio Manager*  
Elizabeth Watt..... *Workshop Coordinator*

The Ottawa Valley Weavers' and Spinners' Guild (OVWSG) is a non-profit, incorporated organization, whose mandate is "to encourage its membership to achieve a high aesthetic standard and technical expertise and to promote and foster the knowledge of, interest in, and appreciation for historic and contemporary weaving, spinning, and their related fibre arts."

## President's Message

### In this issue

President's Message.....p.1  
General announcements.....p.2  
Guild Coordinator announcements...p.2  
Welcome to New Members.....p.4  
Art Show Update.....p.4  
Events.....p.6  
Marketplace.....p.8  
Photos from January meeting.....p.9  
Show & Tell.....p.10  
January meeting minutes.....p.11

Dear fellow Guild Members;

We are now into 2017 and a very happy New Year to you all!! This year is not just an ordinary year. It is our country's 150<sup>th</sup> birthday and our guild already has plans to help celebrate it. If you have not been at recent meetings, one of our members, Carlene Paquette, has kindly donated some of her time to organize an exhibition of our work, "*Fibre of Our Being*" in May at the Shenkman Centre. This is going to be a LARGE exhibit with 150 pieces of our guild's art on individual 12 x 12 inch canvases. Please contribute to this wonderful and creative exhibit. If each member offered one art piece, we would have more than enough!! You can do felting, weaving, yarn creations, handspun colour mixes - the suggestions are endless! Carlene would like them completed and submitted by the April 3<sup>rd</sup> meeting. If you have not yet had an opportunity to do much with the guild up to now, this is your chance! If you need some creative ideas, pop out to Almonte's Mississippi Valley Textile Museum and look at their current exhibit, "*Colour Unboxed*", with over 200 pieces from local artists.

Our guild is one of the largest in the province and we should have no problem putting this exhibit together. Get your creative juices flowing and share one of your works with us!! It will promote our work in the community, help celebrate our country's birthday and may even entice someone to start spinning or weaving!!

From one fibre lover to another,

Ruth

## Meeting Info

### ***This month's meeting:***

Monday, February 6<sup>th</sup>, at  
7.30pm

### ***Program:***

Spinning Wheels

### ***Next meeting:***

Monday, March 6<sup>th</sup>, at 7.30pm

## General announcements

### This Month's Program

The topic of the February Program is *Spinning Wheels*. Alison James will talk about a great variety of spinning wheels, point out the advantages, disadvantages and idiosyncrasies for each type as well as about drive systems and types of wood. Alison will also speak about what to look for when thinking of purchasing a wheel for your personal use. To complement Alison's presentation, Laurie Holcombe will bring her CPW and talk about the history of this traditional Canadian wheel. There will be time for questions and comments following the presentation.

### Remembering Kari Williams

Another one of our senior members, Kari Williams, passed away on 25 December, 2016. I did not know Kari well but as a Norwegian she took a special interest in transparent weaving. She shared with me notes about a Norwegian weaver named Frida Hansen, who took out a patent in 1898 on her new transparent weaving technique where the pattern forms are inlaid into an open weave. As I recall, Kari also gave a program to the Guild about the work of Frida Hansen. For those who remember Kari her obituary appeared in the Ottawa Citizen in December.

Nancy Ingram

### Sheep-to-Shawl Demo

Sheep-to-Shawl Demo! Saturday February 4

If you've never seen a Sheep-to-Shawl, come and see the fun; and if you've enjoyed them before, come and see the fun again!

Guild members will 'field' two teams of spinners and weavers, who promise to start the day with warped looms (yarn courtesy of Wool Thyme) and raw fleeces, and by the end of the day to have completed two shawls each measuring at least 24x72 inches. Yes, it can be done!

The event will take place in the foyer of the Guild building starting at 9:30 Saturday morning, February 4. So come, bring your interested friends, and check back several times over the course of the day to see the shawl's progress.

## Announcements from guild coordinators

### Studio

#### Studio News:

**Decaf Coffee** pods are now available. They are in the top drawer, so that they do not get mixed up with the regular coffee.

**Sign-in sheets** in the studio and classroom now have 3 extra columns. Artistic, Volunteer and Business. Please check the appropriate box(es) for your visit. There is a definition guide located above the sign-in sheets. If in doubt...please guess.

**VERY IMPORTANT:** The sign-in sheets are our proof that the studio and classroom are being used. The extra 3 columns will help the grant committee in filling out applications for grants, to continue keeping our studio and classroom available to you. PLEASE SIGN IN, even if it is for a short, in/out period.

#### Classroom Intercom

When there are workshops in the second floor classroom, please note that on the Heartwood House Intercom system (outside the main door), if you scroll down the list, past the entry for OVWSG MAIN, there will be a listing for **OVWSG – Upper**. That is the classroom.

## Workshops

Workshop registrations continue to come in fairly steadily and I have only had to cancel one workshop due to lack of interest (well, poor timing actually, those interested couldn't come on the days I chose, so we may yet reschedule "Weaving for the Home") so far this year. Signing up early does reduce stress in both the Registrar and the instructors so please do so. Last minute sign ups can sometimes be accommodated, on the other hand, I find it quite frustrating to make the call to cancel and then have more registrations come in right after.

Workshops with available spaces coming in February and March include:

Inkle - Patterns from Colour: Sat Feb 25 9-12

Inkle - Warping Refresher: Sat Feb 25 1-4

Wheel Works and Maintenance: Sun Feb 26

Cat Head Basket: Sat March 4, 18

Inkle 2: Sat March 11, 25

Intro to Spinning Part 1: Sat March 11

Double Weave: Sun March 5, 12

Intro to Multi-Shaft Weaving: Sun Mar 19, 26, Apr 2, 9

Please look ahead and sign up early. Use the form on the website, no need to check ahead whether there is space, I will let you know one way or another within about 1 week. If you do NOT hear from me (via PayPal invoice or cheque request email) after more than 7 days (I often catch up workshops on Fridays) please email me directly, the website occasionally eats a registration and I have also had occasional issues with my emails not being received.

Elizabeth Watt  
Workshops Registrar

## Welcome New Members!

Wendy Turner  
Ann Godbold  
Gwendolyn Kerr  
Michelle McEvoy  
Christine Bazinet  
Daphne Wellman  
Shawn Walton  
Janet Lefebvre  
Diana Lefebvre  
Lauren Abrams  
Jane Thacker  
Chanelle Bouladier Laprade  
Catherine MacFabe

Family Membership:

Kate Killey  
Marg Killey

Returning after an Absence:

Emily Adam  
Lesya Lashuk

## Art Show Update

Our show, **The Fibre of Our Being**, will be on display at the LaLande + Doyle Exhibition Space at the Shenkman Arts Centre from May 9 - 28, 2017. We will be hosting a Vernissage reception on Sunday May 28<sup>th</sup> between 1 pm and 3 pm.

The info I have been provided indicates that viewing hours will be Monday to Sunday: 8:30 a.m. to 10:30 p.m. However, selective viewing hours may be established as required.

### **Volunteers:**

Volunteers are needed to help with the show. We need help with:

- The reception
- Intake and Mounting
- Sales Liasons (for work that is for sale)
- Promotions
- Installation/Takedown of canvases

If you are able to help with any of this, please email me ([carlene@paquettefamily.ca](mailto:carlene@paquettefamily.ca)) or speak with me at the meeting. Thanks in advance for considering this!

### **Pieces for Sale:**

Artists can list their work for sale. However, please be advised that we are obligated to collect 15% of the pre-tax sale price and submit that money to the AOE Arts Council on the last day of the exhibit. This money will be deposited in the ARTicipate Endowment Fund. According to our agreement with the city we are responsible for collecting and remitting the commission and all applicable sales taxes.

We need a couple of volunteers to act as Sales Liasons for the show. These people would field any inquiries to purchase, connecting buyers and artist sellers. The sales liason may help collect the funds from buyers, tally/pay the commission, distribute money back to the sellers and assist with arranging for the work to get to the buyers. Ideally the sales liasons are people who are experienced sellers.

### **Intake and Mounting:**

If you have pieces that are completed and you are ready to submit them. Please fill out the following information and attach it to the back of your canvas:

Name of Artist:

Name of work:

Technique/Materials Used:

Sale Status: Please indicate either Not for Sale or state your price

Note: If your piece is for sale, please also add you contact info (email/phone number). We will not share this at the show. This is to facilitate communication between the sales coordinator and the artist when a sales inquiry occurs.

We need a couple of volunteers to assist with intake. We will need to catalog all the pieces as they are returned and create a master listing of the pieces to be submitted to the City prior to the show opening. We also need to attach mounting hardware to the rear of all the collected pieces.

### **Reception:**

Our reception is on **Sunday May 28<sup>th</sup> from 1 to 3 pm**. We will need to provide light snacks (baking, fruit/veggie/cheese trays, juice, etc.) We need someone to coordinate the reception and for members to volunteer to bring noshes.

### **Promotions:**

We need to promote the show. There are guidelines we need to follow for printed adverts (logos, etc. that we are required to use). If you want to help get the word out and volunteer to work on promotions please let me know.

### **Installation and Take-down of Canvases:**

The Installation date/time is Monday May 8<sup>th</sup> at 10 am.

The Takedown date/time is Monday May 29<sup>th</sup> at 10 am.

If you are available to help with this job please let me know.

Thanks very much for reading through this long note. I appreciate your patience. As you can see, there is a lot of work to be done between now and the end of May. Luckily, many hands make light work. I look forward to working with all of you to make our show a success.

## Events

### **Colour Unboxed by Out of the Box**

December 20, 2016- February 25, 2017

Mississippi Valley Textile Museum

Vernissage: Saturday, January 14, 2017

The 12x12 colour challenge pieces will all be hung, which might be an inspiration for OVWSG guild members. OOTB has also produced a book on the colour challenge.

### **The 18th Annual Chesterville Spin-In**

**Wednesday, Feb. 15, 2017 from 9a.m. to 4p.m.**     Requesting a \$4.00 donation at the door.

Now on Facebook    [@ChestervilleSpinIn](#)

-----  
**\*\*\*\*\*New Location\*\*\*\*\***

**Royal Canadian Legion Branch 434**

167 Queen St W, Chesterville, ON K0C 1H0

**613-448-1997**

[Directions](#)

Our theme for this year is "Rare Breeds" (any fibre spun/knit out of Rare Breeds). The 2016 theme of Rare Breeds is in conjunction with the Wovember.com theme (a month long blog on everything woolly).

Some surprise displays and many more vendors in attendance in 2017.

Please show our vendors your support for always helping to feed our passions.

-----  
Non-alcoholic beverages supplied by the Legion. Bring a lunch or you can visit several venues in town.

Regards,

Nancy MacMillan

[613-448-1411](#)

[nancy.macmillan021@sympatico.ca](mailto:nancy.macmillan021@sympatico.ca)



Ontario Handspinning Seminar

## Our Past Inspiring Our Future: 150 years of spinning in Canada



Come spin with us!

June 16-18, 2017

The Ambassador Hotel  
& Conference Centre,  
**Kingston, Ontario**

[www.ontariohandspinningseminar.ca](http://www.ontariohandspinningseminar.ca)

Terrific classes

Fabulous sale room with items ranging from raw fleece,  
through dyed fiber and tools (Entry \$5 for non-attendees)

# LANDMADE

connecting urban makers with local farmers

On february 5th the Upper Canada Fibreshed is bringing  
farm-fresh yarn, roving and fleece to the urban maker.

Join the Upper Canada Fibreshed this February  
5th for a day of farm-fresh yarn, roving and fleece.

The Upper Canada Fibreshed is excited to present LandMade, a one-day event bringing local fibre farmers to the Gladstone Hotel and giving urban knitters, spinners, crocheters, weavers, felters, makers and artists the chance to discover fleeces, rovings and yarns direct from the farm. Eight farms that raise sheep, alpacas and mohair will be available to talk all things fibre, and to provide locally and sustainably raised materials to the natural fibre enthusiast. Join our knitting circle and start your very own Fibreshed Knitalong project. Or bring your needles, hooks, spindles and wheels and enjoy conversation and making over coffee, tea or wine in the Melody Bar or the Cafe. Admission is Free.

For more information please  
visit [www.uppercanadafibreshed.ca/landmade](http://www.uppercanadafibreshed.ca/landmade)





# Marketplace

The Marketplace portion of the newsletter is used to promote and assist its members. **Current members of the OVWSG can advertise at no charge.** Some restrictions may apply as to space availability and file restrictions.

Contact Natalie at [marketplace@ovwsg.com](mailto:marketplace@ovwsg.com) or [newsletter@ovwsg.com](mailto:newsletter@ovwsg.com)

Lambskin rugs available. A unique, made in Ontario gift for that special occasion. Prices vary. And then there is fibre - wool roving and wool-alpaca roving. See our Kinnaird Farm Facebook page. Let me know if there is anything in particular you would like me to bring to the meeting. Email [KellyMMacGregor@gmail.com](mailto:KellyMMacGregor@gmail.com) or [KinnairdFarm@gmail.com](mailto:KinnairdFarm@gmail.com)

Strauch drum carder, medium teeth, 60tpi, chain driven,  
very good condition 200\$ obo  
[carmspace@hotmail.com](mailto:carmspace@hotmail.com), [613-241-2863](tel:613-241-2863)

Créations Christine  
Représentante d'Ashford Dealer  
Pour plus d'information - For inquiries: 819-405-2007  
[cgagne40@gmail.com](mailto:cgagne40@gmail.com) Christine Gagné

**For Sale: Glimakra standard**, 60" loom. Counter balance or counter march set up. Bench, shuttles, reeds.  
\$ 3200  
Eli Natvik. Located between London and Chatham  
519 678 3279

**For Sale: Silver Reed Chunky Electronic knitting machine** (model SK-890 9mm/2.8 gauge with 110 needles) and Ribber (model SR155). Stitch types: Stockinet, Fair Isle, Tuck, Slip, Punch Lace, Weaving and others.

Excellent working condition. All manuals and accessories. Asking \$500.

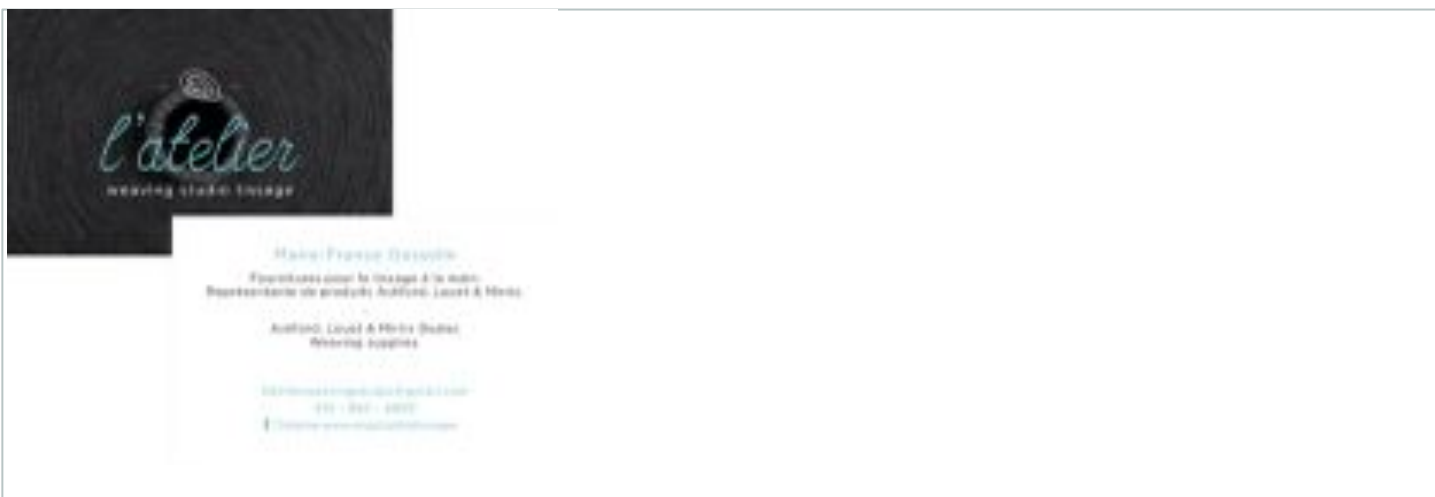
For more information regarding pricing go to: <http://www.aboutknittingmachines.com/silver-reed-used-price-list.html>

(SK890 \$600 - \$1,200, rare and popular and the SK155 RIBBER is the one to get \$400 - **NOTES: SK890**, 9mm is a computerized machine that is highly sought after, make sure to get the SR155 RIBBER and not any other)

Contact Lianne at [eesilife@gmail.com](mailto:eesilife@gmail.com) or [819-744-1438](tel:819-744-1438).







## January Program

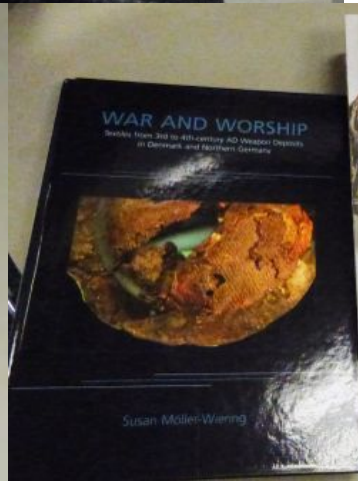
“Your Studio” Panelists Laurie Harkin-Chiasson, Ann McElroy and Jean Sharp discussed their studio setups.



## Show & Tell



Left to right, top to bottom:  
Emily's felted rugs x2;  
Elizabeth's scarves using  
corespun x2; Liz's Krokbragt  
piece for the guild's art exhibit;  
Jan's supplemental warp inkle  
band and new books.





# January 2017 Meeting Minutes

## General Membership Meeting 9 Jan 2017

### Chair: Ruth Cooper

- Chair welcomed members, new members, and guests. (48 members in attendance, plus one new member and 1 guest).
- Executive was introduced with thanks for all their support over the fall.

*\*Reminder to all members to please bring indoor shoes during dirty weather as we borrow our meeting space from the Unitarian Fellowship.*

### Business & Announcements:

- **Grant update:** Kelly and Mandy are working hard on finishing our grant which ensures we can keep offering as many services to our members as we do. Thank you ladies!
- **Member Challenge!** The OVWSG President challenges our members to do something new or different whenever an opportunity arises this year. One area that can use support is our equipment team as many tasks require some extra hands to complete. The librarians could also use support with some of their projects.

*Getting involved with guild work and activities is very rewarding and brings you closer to your community and peers. We look forward to seeing you!*

- **Fundraising Committee:** This is on the horizon as the guild would like to organize a fundraising committee. We'll be starting brainstorming sessions soon. Your input is appreciated!

**Member Question:** Do we have anyone who focuses on publicity?

**A:** Just during the Ex & Sale at this time. We used to have someone but it never attracted a volunteer to look after it, so it was dropped from the roster.

- **Workshops:** Kumihimo has one spot left, copper weaving has space, Inkle has space.
  - The cancellation policy is up to date so please take time to read it. It's on the website at [www.ovwsg.com](http://www.ovwsg.com) under 'Workshops.'
  - Cheques are cashed earlier now approximately 2 months before a workshop. This helps us confirm attendees and avoids our waitlisted members from missing an opportunity to participate.
- **Scottish Diaspora Tapestry** <http://www.scottishdiasporatapestry.org/>
  - The exhibition is at the Ottawa Public Library 120 Metcalfe Street Ottawa.
  - Jan 14, 10am-3pm we will have a demo team there and anyone who wishes to help with demonstrations please contact Bernadette at [demo@ovwsg.com](mailto:demo@ovwsg.com), This show has had lots of publicity as the exhibition has travelled the globe.
- **Library:** changes are underway to our library structure. There will be nice clear sections for; fibre prep, animal husbandry etc...
  - Work will also include a reduction of decimal places down to 3-4. And this will make things easier to find.

- Most magazines have been entered into the database now.
  - Data work is in progress to help track our statistics and show trends.
  - The great migration of the library materials into their new arrangement will be continuing through 2017.
- **Sheep to Shawl:** Kelly will be sending an email out to the team. We're meeting at the Studio/Unitarian Lobby on Feb 4, and it's pot-luck lunch!
  - **Fibre of Our Being (150 squares exhibition):** The exhibition will be on display for three weeks in May at Shenkman Art Centre.
    - Members who wish to participate need to cover a 12" canvas square with something fibre related.
    - Purchase your square from Carlene Paquette for \$10 (price includes the cost of the hanging hardware).
    - Final products must be in by the April meeting, but you may submit it beforehand.
    - You may put a purchase price on your piece if you wish.
    - There are still about 100 canvases for sale! You may buy more than one!
    - If you'd like to do a woven piece for the show we can set up a community loom project on network nights. Contact Ruth.
  - **OHS (Ontario Handweavers & Spinners) conference "At the Fulcrum"** – May 5- 7. 2017 Seneca College, Finch Ave., Toronto. Featuring Merchant Mall, Workshops, Guild Challenge, Accommodation and networking with weavers and spinners from across Ontario. Keynote speakers:
    - 1) Dorie Millerson, Assist Chair of Fibre and Chair of Material Art & Design at OCAD University. Artist of complex thread sculptures of modern life. (Does neat 500 yr. old lace with needle & thread)
    - 2) Mary Underwood: Spinner, weaver and historian, turned her interest and research into an adventure. Guild Challenge Theme "Supporting and Embracing" but the twist this year is display must be mounted on a dress form! Registration starts Jan. 1, 2017.
    - Details on their website. WASOON the following year (2018) in Timmins.
  - **Items for sale:** Magazines, yarns and some equipment for sale at side table at break.
  - **Specialists:** the guild is looking to bring more specialists in to teach. Ruth passed some lists around to the members to allow them to indicate their top two interests for workshop instructors. This list will also go out with the newsletter or in email.
  - **Membership:** Renewals during 2017 will be taking place from the last date of signup and reminders will come out in email.
  - **Studio Manager:** The studio has been very clean after use, thank you to everyone for pitching in to keep it clean! It's very nice for the next person using it.
    - *The sign-in sheet has been updated to help us track our statistics better for our grant paperwork.*
  - **OHS Ontario Handspinner Seminar:** Carlene lets us know this is taking place in Kingston this year, and then it will be moving to London for the next 2 years. It's a lot of fun and a good deal and she'd recommend it to anyone.
  - **Member updates:** A. Sunahara has been ill but she is on the mend. C. Guerette is also sick and we would like to send cards on behalf of the guild.

## Program: Your Studio – a panel discussion with...

**Ann McElroy** ~ **Jean Sharp** ~ **Laurie Harkin-Chiasson**  
**Studio in North Gower** ~ **Studio over garage** ~ **Studio retrofit in horse barn**

Studio includes anything from a dedicated, separate space to a corner in your house. This program will discuss best practices, pitfalls, recommendations and general problem solving. Our speakers came prepared with slideshow images of their spaces to better elaborate their talks. The events of the program are provided in excerpt and have some variations in wording.

*Mandy introduced our program. A working space is what we're talking about; both big and small. She introduced our speakers and asked that they talk about their spaces and what they've learned over the years.*

**Anne McElroy** was our first speaker and she works in a concrete building that was once a dog kennel. She shows many images of her space and tells us that we will need shelves and clear plastic bins as she points out all of the ones she's got stacked throughout her space. "You'll always need more space."

Q: How did you decide where to put things?

Anne: Things go where they are high use. It's kind of a rotation, as you use things you bring them out and then others go away. It's set up kind of around the room, and I keep a garment rack to keep items on. "Felters should have a floor drain!" Shelves are in high use, and are very accessible.

Q: Is it arranged in a way that is process oriented?

Anne: Everything happens on one table with felting.

Q: Can you lead us through the process?

Anne: There is a section of bins for fibres waiting to be processed.

Q: Where do you put finished pieces?

Anne: In bins under the table. *Anne also uses a garment rack to hold the items she takes pieces off of for finishing work.*

Q: Can you suggest lighting?

Anne: My lighting sucks. It's fluorescent. I would love a window for natural lighting. There are also obstructions based on where the lights are positioned that cast shadows. If I want to take photos of my work I go somewhere else to do it.

Q: So this is a basement?

Anne: This used to be a kennel. It was closed and now houses my studio and some wood working shops.

End.

**Jean Sharp** comes up to talk about her studio with many photos in slideshow. Jean had looms crammed into a variety of spaces in her life up to this point. Most of these are not new or purpose-built spaces by any means. There was a Dorothy loom in her bedroom growing up.

Her new studio was above her garage measuring 12' x 19' with very tall ceilings. She also has shelves from floor to ceiling along one wall. Five windows are spread around the South, East, and North walls. There is vinyl wood pattern flooring she selected so that she wouldn't have to worry about scuffs and other damage. Jean keeps a small vacuum in the room.

Jean mentioned a she had thought about renting a space, but \$300/mo is expensive and you have to leave your home. She had to get out of the basement though. Her new space was \$75,000, but it was really a lot of work to put it in. This is her retirement plan. No matter what space you have, as long as you can set up it's doable.

Q: Is there a door from the studio through the house?

Jean: Yes, it was made through the space that was once a window! So it looks like it was always there.

Q: Heat?

Jean: It's all insulated; they added a duct straight to it. It's all pot lights and one antique lamp. It's a warm, inviting, cozy space. It's my space ☺

End.

**Laurie Harkin-Chiasson** our membership coordinator and studio manager has both a built studio and one also set up in the corner of a room in her home. She has a slideshow of photos of the spaces she refers to throughout her talk.

The small corner holds a 22" loom. To make this small space useable, Laurie built a tray that sits on top of it that she can slide back and forth to get access to the castle, and also attached a magnet bar across the front face of this tray so she can keep nuts, needles, pins etc handy. At this mini-studio station she keeps her favorite chair, and she also keeps a rug/blanket handy to throw over the entire setup to protect it when not in use from the daylight of the window.

The built studio is near the house. It came about because they needed to build a horse barn. It's been a work in progress over several years and still is; one year they did Tyvek, the next was siding, next came windows. In the big studio there is a computer, a phone, and a shop-vac. Three sides of the studio are setup for weaving and one for wood working. The space is heated with a wood stove. Windows are on all sides – that was one of their criteria when building it. There is a fire extinguisher near the woodstove. A smoke detector is installed. Light switches are organized so you can operate them coming and going.

Laurie is extremely organized and stores her yarn in a rolling face cabinet and uses Dry Z Air to keep moisture out which she buys at Walmart or Canadian Tire (Marine section), and she uses bounce sheets to deter mice. Laurie makes a detailed inventory of her yarns by wrapping samples and creating sample sheets that correspond to cones with a location system and an inventory binder. She has computerized the inventory binder too. These are also marked so that she has an instant yarn inventory, for her year-end tax submission.

As far as storage is concerned, Laurie swears by clear bins. She also uses a clear plastic wheeled stand since she can't build a tray for the top of her counterbalance loom. She keeps tarps handy to cover things when she's sanding woodworking projects. Pests can pose a problem.



It's a workshop built on a shed. Squirrels get trapped and released. Sticky traps and rat poison may be useful. Pest eliminator sound devices are installed. Warfarin resistance is real! Wilsarin is effective. Laurie cannot stress that safety is a very important consideration when setting up a studio.

End.

*Mandy takes a few minutes to show some storage of panel member Marianne who sent in photographs and a brief description of their own studio setup*

MAD yarn storage and an AVL loom in the space. She finds that pigeon holes are inspiring but she can't see all her stuff. Her blocks are labelled alphabetically right to left for each column and then numerically from top to bottom. All the yarns are weighed and filed in an old day agenda binder with holes punched along the edge and amounts of each are noted. Some are stored in boxes by type of fibre and the material in the bins is what isn't listed in the binder.

End.

### Panel Q/A

Q: Do you have to keep shuffling things as you work?

- Anne: You have to keep moving it when working anyway. If you move it around a lot you avoid moths. Move from big bins to small bins.
- Laurie: You start running out of space and so will have to keep organizing.
- Anne: All my outlets are a head height – functionality.

Q: Can you provide us with one big takeaway from each of you? One big tip?

- Anne: Clear bins! You'll always forget what you have if not. Group your material by type.
- Jean: Don't stop dreaming. This was my dream from day 1.
- Laurie: It's always a work in progress. Keep the useful things close based on your patterns. Safety is important!

Q: Wishlist?

- Anne: I'd like an ironing board that folds down from the wall.

Q: How far are your detached studios from the house?

- Anne: 20 seconds walk.
- Laurie: Right behind the house.

*Comment: Zoning and taxation point of interest. If it's detached it's not taxed if it's an outbuilding depending where you are.*

Q: Is there water hooked up in your spaces?

- Jean: I just have heat and electricity but there is a bathroom down the hall.
- Anne: I have to run to the house, I have cold water.
- Laurie: I have to go to the house.

**Break** -----

### Show and Tell

Garrie Joyce	Invitation to MVTM: Out of the Box opening
Emily Adam	Felt carpets
Elizabeth Watt	Rigid heddle woven scarves & sample (corespun)
Liz Bivens	Krokbragd (Fibre of Our Being 150 squares project)
Jan Scott	Christmas books & Inkle – supplemental warp

Thanks to all. Meeting adjourned 9:40pm.

**Next meeting takes place Monday Feb 6, 2017, 7:30pm.**